



TD13 Display Cabinet Cupboard
W 94cm 37" H 169cm 66½" D 33cm 13"

TD13A One Door Tall China
W 51cm 20" H 169cm 66½" D 33cm 13"

Information:
Interior lights can be fitted. *See price list.*

If the display cabinet has glazed sides it will be supplied with glass shelves.

Information:
TD14B, TD14C and TD14E are available on Queen Anne legs as standard or on bracket feet, please specify.

TD14B Display Cabinet
W 94cm 37" H 106cm 42" D 33cm 13"

TD14C Queen Anne Display Cabinet
W 54cm 21" H 126cm 49½" D 33cm 13"

TD14E 1 Door Bow Display
W 54cm 21" H 112cm 44" D 33cm 13"



TD14 Display Chest
W 76cm 30" H 160cm 63" D 35cm 13½"



TD19 Bow Fronted Display Cupboard
W 84cm 33" H 178cm 70" D 40cm 16"



TD14B



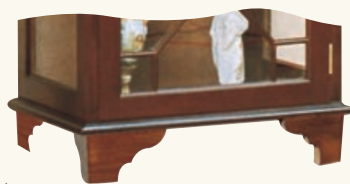
TD14C



TD14E



Options:
All available with optional bracket feet.



TD15A Low Display Cabinet
W 79cm 31" H 87cm 34" D 31cm 12"



TD14A 2 Door Bow Fronted Display
W 84cm 33" H 112cm 44" D 36cm 14"

Corner Cabinets

Bookcase Systems



TE10 Double Bow Front Corner
W 92cm 36" H 183cm 72" D 61cm 24"

Information:

The TE4, TE1 and TE10 differ from the TE4X (Budget Corner Unit) in that they have wooden glazing bars and more expensive veneers.



TE4 Bow Front Corner
W 66cm 26" H 183cm 72" D 46cm 18"

Also Available:

TE1 Flat Front 13 Pane Door Corner
W 66cm 26" H 183cm 72" D 46cm 18"



TE4XC Bow Front Crystal Cut Glass
W 66cm 26" H 183cm 72" D 46cm 18"

Information:

All units are available with glass shelves and lights.

All cabinets should be fixed to the wall.



TE10B Double Bow Corner Base
W 92cm 36" H 79cm 31" D 61cm 24"



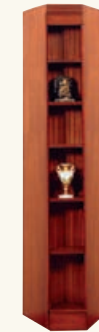
TE14 Hanging Bow Front
W 56cm 22" H 103cm 40" D 41cm 16"



TE16 Bow Front Corner Base
W 66cm 26" H 79cm 31" D 46cm 18"



TD



TE



TP



TDA



TDB



TH



TA



TB



TC



TL



TJ



TJF



TK



TN



Important Information Before Ordering:

1. The top cornice increases the carcass width (813mm 32") on standard sized units by 1/4" 32mm each side.
2. The top cornice increases the carcass depth (320mm 12 3/4") by 1/4" 32mm at the front.
3. The plinth moulding is 15mm 3/8".
4. Bespoke TD (Open Bookcase) can be reduced in width. *See price list.*
5. When ordering bespoke units with a reduced width, specify carcass width of each unit. Bearing in mind that an additional (32mm 1 1/4") will be added to each end due to the cornice.
6. These are free standing units, if they are to stand within an alcove make allowances for skirting boards, uneven walls and cornice etc.
7. Allow 40mm 1 1/2" gap between the top of the unit and the ceiling for manoeuvring into the vertical position.
8. Check dimensions thoroughly and check delivery access.
9. All units are supplied fully assembled with pre-drilled locking devices and height adjustable feet, to make assembly easy for the customer.
10. The depth of adjoining units in a corner need to be identical ie, TD, TDA or TDB (Depth 320mm 12 3/4").
11. Shelf depth is 300mm 12".
12. All Bookcase doors will be supplied with crystal cut glass. *See options below & price list.*
13. It is not possible to join or add units at a later date.
14. These units are made in Mahogany, Cherry and Oak veneers. (The Cherry will look similar to our standard Yew colour).

Options

Reduce width of TD
Extra wooden shelves
Glass shelves and lights
Optional door glazing



Square



Gothic



13 Pane



Bevelled



Crystal cut

The standard glazing on bookcase systems will be crystal cut glass. These other options are available. *See price list.*